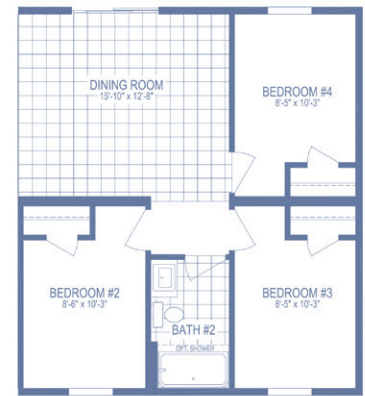
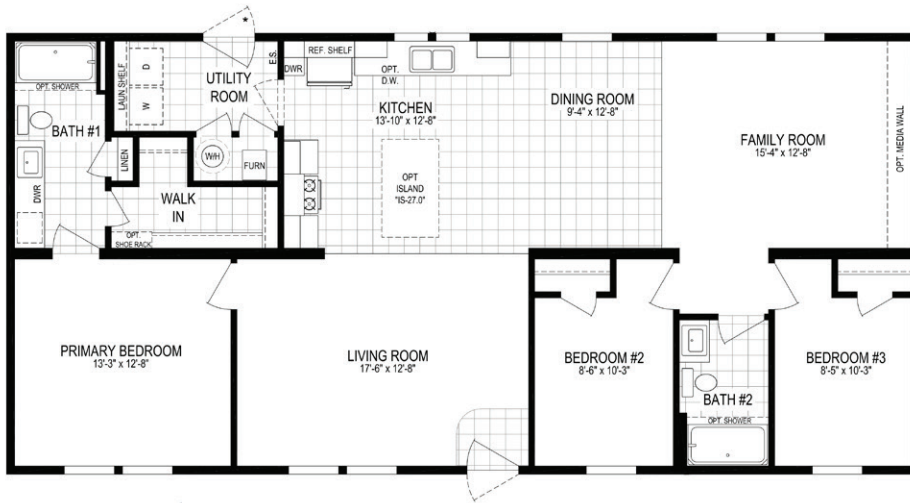


RESIDENCE SERIES

Elm St. 5628-MS018-1

HUD/MOD

3 beds | 2 baths | 1,512 sq. ft. | 28x56



OPTIONAL 4TH BEDROOM



OPTIONAL END ENTRY



OPTIONAL BASEMENT STAIRWELL

Builder Notes:

- HUD Homes That Have a Gas Water Heater and a 5/12 Roof Pitch will Require an "SC" on Site Inspection
- Doors Marked with a "*" Cannot Have the HUD Per Saver System and Will Need Perimeter Blocks or Adjustable Outriggers (On Site if Local Code Allows).

The home series, floor plans, photos, renderings, specifications, features, pricing, materials and availability shown will vary by retailer and state, and are subject to change without notice.