

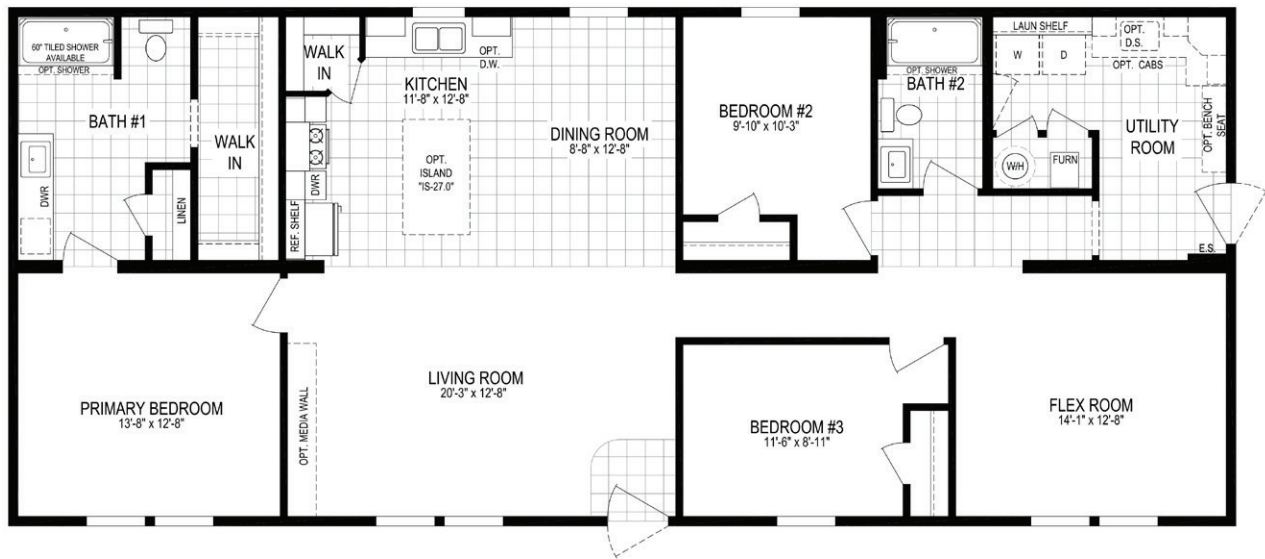
RESIDENCE SERIES

Field Point 6428-MS030-1

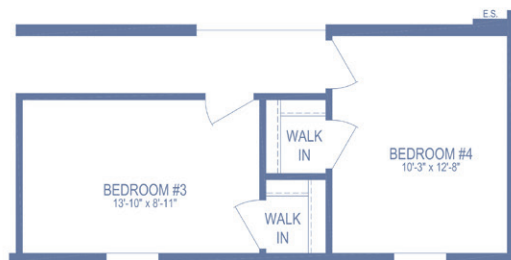
HUD/MOD

3 beds | 2 baths | 1,728 sq. ft. | 28x64

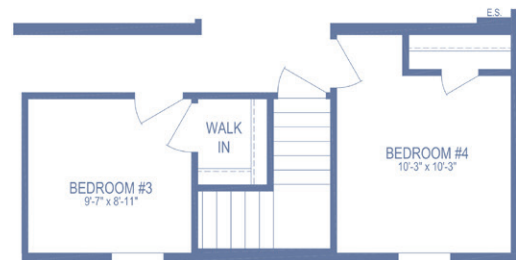
QUARTZcafé



DELUXE BATH OPTION "A"



4TH BEDROOM OPTION



OPTIONAL BASEMENT STAIRWELL
* ONLY AVAILABLE WITH 4TH BEDROOM OPTION

Builder Notes:

- HUD Homes That Have a Gas Water Heater and a 5/12 Roof Pitch will Require an "SC" on Site Inspection

The home series, floor plans, photos, renderings, specifications, features, pricing, materials and availability shown will vary by retailer and state, and are subject to change without notice.