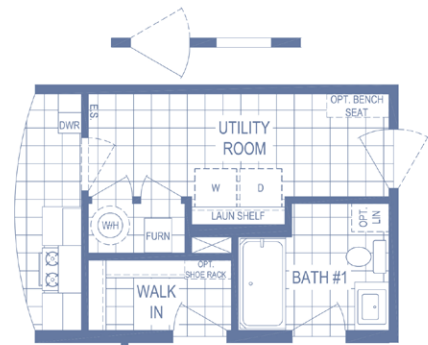


RESIDENCE SERIES

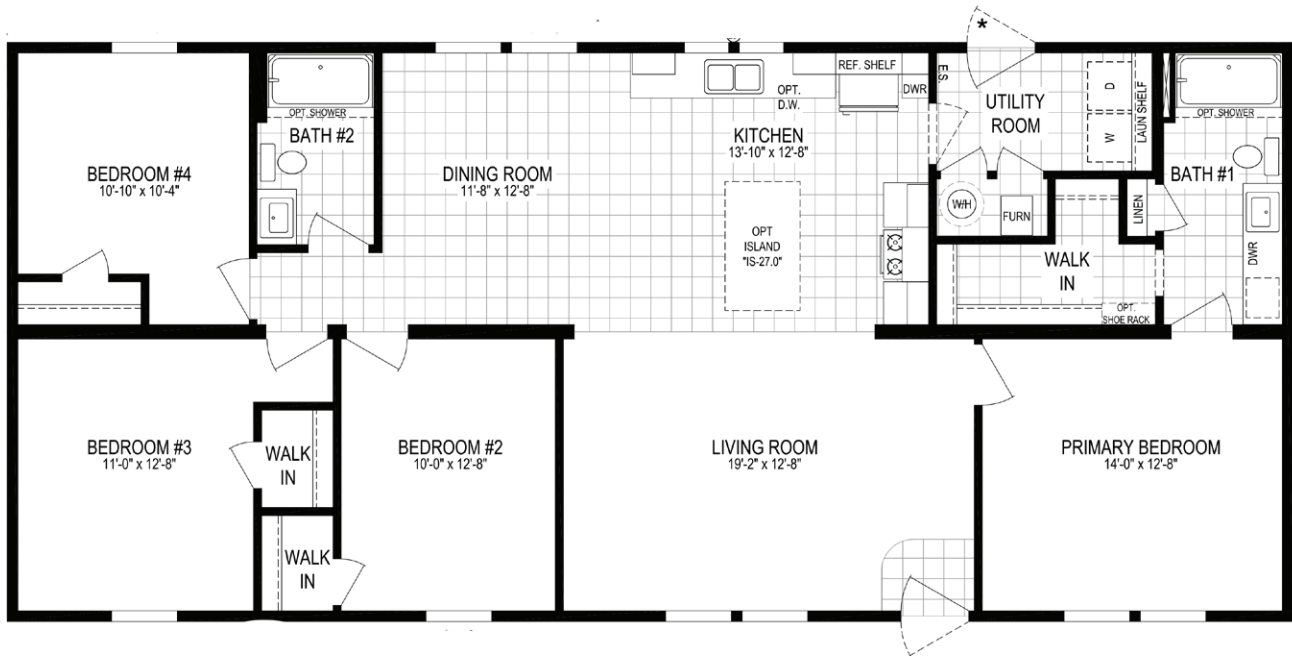
Gumwood Rd. 6028-MS028-1

HUD

4 beds | 2 baths | 1,620 sq. ft. | 28x60



OPTIONAL END ENTRY



Builder Notes:

- HUD Homes That Have a Gas Water Heater and a 5/12 Roof Pitch will Require an "SC" on Site Inspection
- Doors Marked with a "*" Cannot Have the HUD Per Saver System and Will Need Perimeter Blocks or Adjustable Outriggers (On Site if Local Code Allows).

The home series, floor plans, photos, renderings, specifications, features, pricing, materials and availability shown will vary by retailer and state, and are subject to change without notice.