

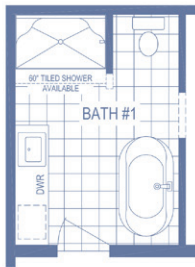
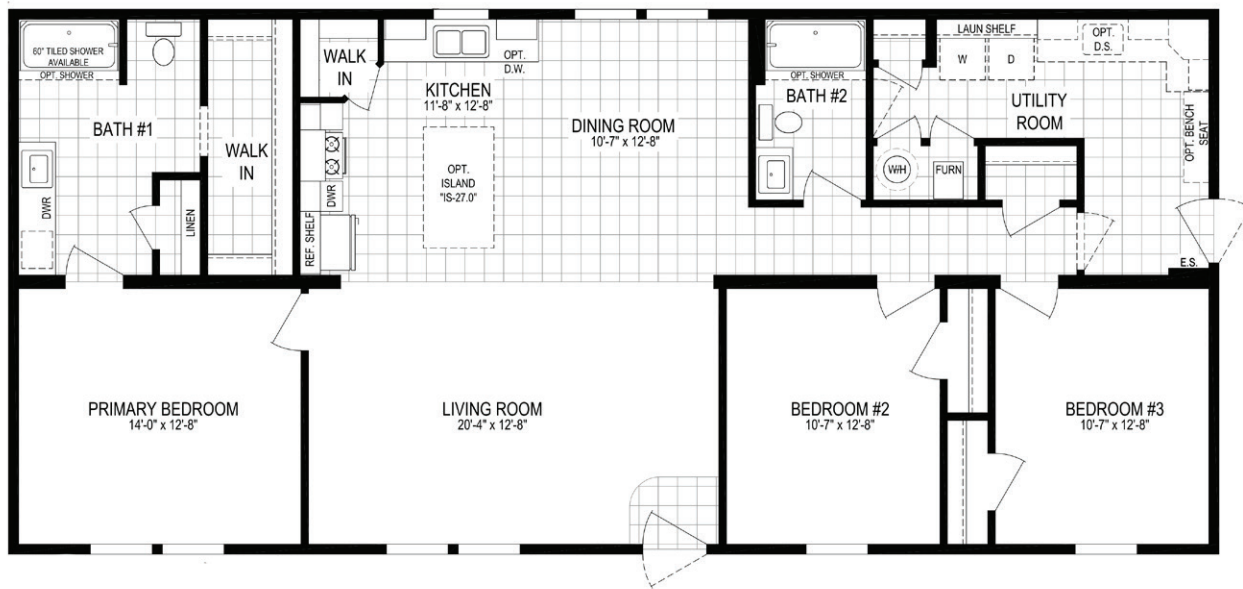
RESIDENCE SERIES

Michigan Ave. 6028-MS026-1

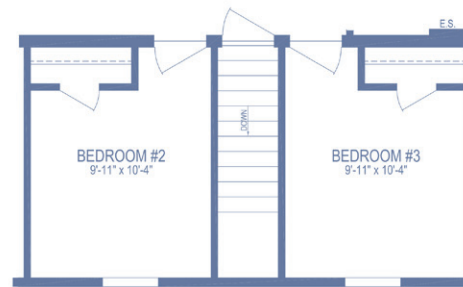
HUD/MOD

3 beds | 2 baths | 1,620 sq. ft. | 28x60

QUARTZcafé



DELUXE BATH OPTION "A"



OPTIONAL BASEMENT STAIRWELL

Builder Notes:

- HUD Homes That Have a Gas Water Heater and a 5/12 Roof Pitch will Require an "SC" on Site Inspection

The home series, floor plans, photos, renderings, specifications, features, pricing, materials and availability shown will vary by retailer and state, and are subject to change without notice.