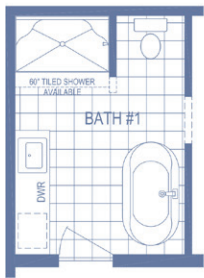
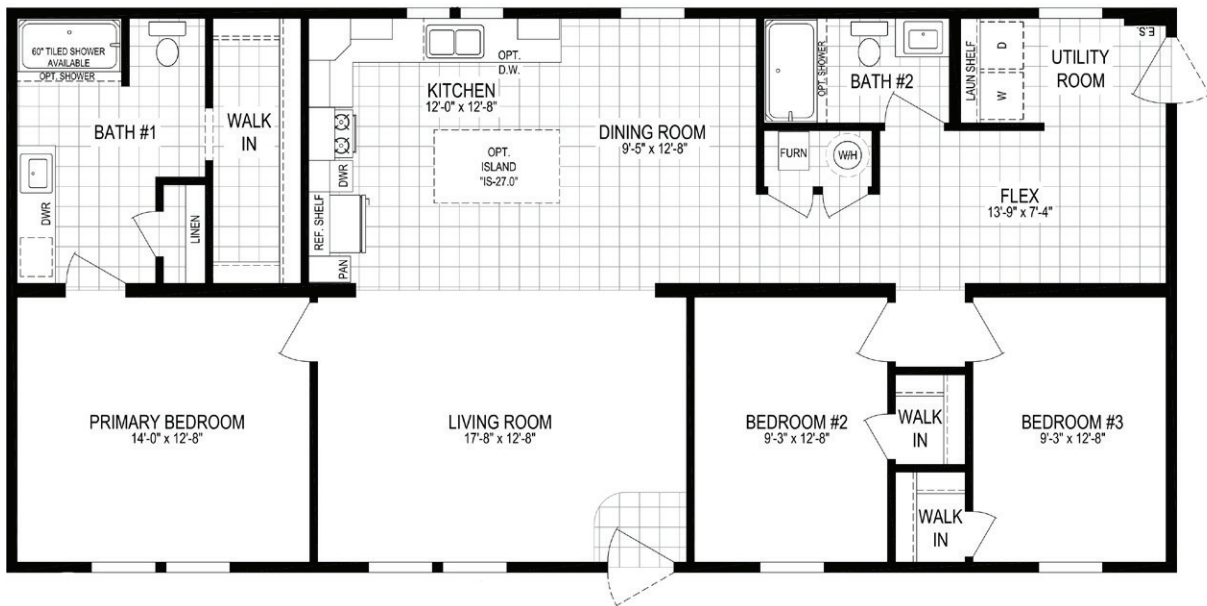


# RESIDENCE SERIES

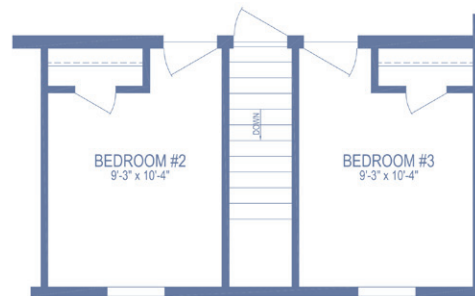
## Quiet Harbor 5628-MS046-1

HUD/MOD

3 beds | 2 baths | 1,512 sq. ft. | 28x56



DELUXE BATH OPTION "A"



OPTIONAL BASEMENT STAIRWELL

### Builder Notes:

- HUD Homes That Have a Gas Water Heater and a 5/12 Roof Pitch will Require an "SC" on Site Inspection

The home series, floor plans, photos, renderings, specifications, features, pricing, materials and availability shown will vary by retailer and state, and are subject to change without notice.